

Globe Valve, Metal

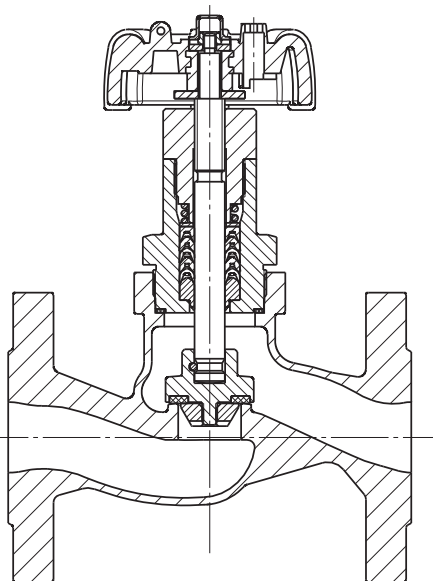
Construction

The GEMÜ 537 manually operated 2/2-way globe valve has an ergonomically designed plastic handwheel. The valve spindle is sealed by a self-adjusting gland packing providing low maintenance and reliable valve spindle sealing even after a long service life. The wiper ring fitted in front of the gland packing protects it against contamination and damage. A handwheel extension available as an option enables installation of the valve in insulated pipelines.

Features

- Valve bodies available in SG iron and stainless steel
- Versions according to ATEX on request
- Good flow capability and compact design
- Modular system, the valve can also later be retrofitted with pneumatic actuators

Sectional drawing



Technical data

Working medium

Corrosive, inert, gaseous and liquid media which have no negative impact on the physical and chemical properties of the body and seal material.

Max. perm. pressure of working medium see table

Media temperature -10° to 180° C

Max. permissible viscosity 600 mm²/s (cSt)

Other versions for lower/higher temperatures and higher viscosities on request.

Nominal size	Max. operating pressure	Kv value
DN	[bar]	[m ³ /h]
15	25	4.6
20	25	8.0
25	25	13.0
32	25	22.0
40	25	35.0
50	16	50.0

Kv values determined acc. to IEC 534 standard, valve body material stainless steel 1.4408 and flanges EN 1092.

Ambient conditions

Max. ambient temperature 60° C

Pressure / temperature correlation for globe valve bodies

Connection code	Material code	Max. allowable pressure (barg) at temperature °C *				
		RT	50	100	150	200
8	90	16.0	16.0	16.0	15.5	14.7
8 (DN 50)	37	14.6	13.9	12.4	11.2	10.3
10 (DN 15-40)	37	25.0	23.7	21.3	19.2	17.7
39	90	16.0	16.0	16.0	15.5	14.7
39 (DN 15 - 40)	37	19.0	19.0	16.0	14.8	13.6
39 (DN 50)	37	16.0	15.4	14.0	12.5	10.5

* The valves can be used down to -10°C RT = room temperature

Order data

Body configuration

2/2-way body Code D

Seat seal

PTFE Code 5

PTFE, glass reinforced 5G

Connection

Flanges
Flanges EN 1092 / PN16 / form B
length EN 558, series 1,
ISO 5752, basic series 1 Code 8

Flanges EN 1092 / PN25 / form B
length EN 558, series 1 10

Flanges ANSI class 125/150 RF,
length EN 558, series 1,
ISO 5752, basic series 39

Control function

Manually operated Code 0

K number

Handwheel extension Code 3007

Valve body material

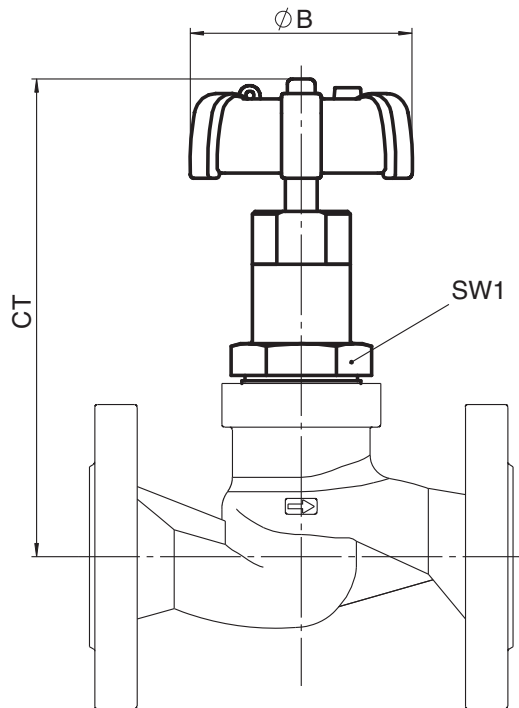
1.4408 Cast stainless steel Code 37

EN-GJS-400-18-LT
(GGG 40.3) SG iron 90

Order example

537	25	D	10	37	5	0
Type	537					
Nominal size	25					
Body configuration (code)		D				
Connection (code)			10			
Valve body material (code)				37		
Seat seal (code)					5	
Control function (code)						0
K number (code)						

Installation dimensions [mm]



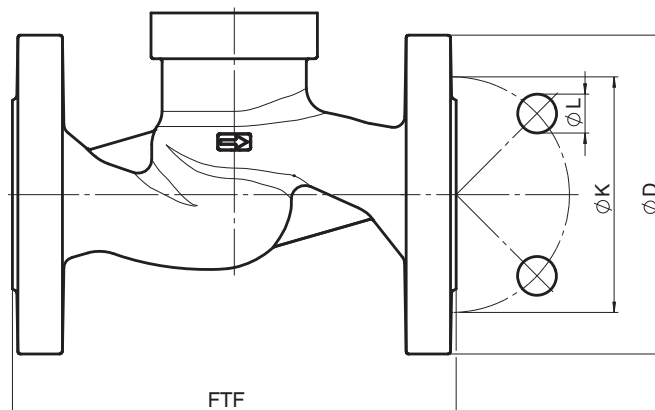
DN	CT	øB	SW
15	155	90	41
20	165	90	46
25	180	90	46
32	188	90	41
40	206	90	41
50	216	90	50

Body dimensions [mm]

Flanges, connection code 8, 10, 39
Valve body material: 1.4408 (code 37), EN-GJS-400-18-LT (code 90)

DN	SW1 metric	FTF	Number of bolts	Connection code 8, 10			Connection code 39		
				ø D	ø K	ø L	ø D	ø K	ø L
15	36	130	4	95	65	14	89.0	60.5	15.7
20	41	150	4	105	75	14	98.6	69.8	15.7
25	46	160	4	115	85	14	108.0	79.2	15.7
32	55	180	4	140	100	18	117.3	88.9	15.7
40	60	200	4	150	110	18	127.0	98.6	15.7
50	75	230	4	165	125	18	152.4	120.7	19.1

For materials see overview on last page



Overview of metal bodies for GEMÜ 537

Connection code	8		10	39	
Material code	37	90	37	37	90
DN 15	-	X	X	X	X
DN 20	-	X	X	X	X
DN 25	-	X	X	X	X
DN 32	-	X	X	X	X
DN 40	-	X	X	X	X
DN 50	X	X	-	X	X

Other globe valves



GEMÜ 530



GEMÜ 532

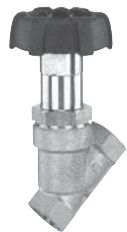


GEMÜ 534



GEMÜ 520

Other angle seat globe valves



GEMÜ 507



GEMÜ 514



GEMÜ 550



GEMÜ 554

For further globe valves, accessories and other products, please see our Product Range catalogue and Price List.
Contact GEMÜ.



GEMÜ® VALVES, MEASUREMENT
AND CONTROL SYSTEMS